

# Micro-Suction Tape

Micro-suction tape is a closed cell foam with microscopic craters in its surface. When the tape is pushed against a sealed surface the craters function like micro suction cups allowing the tape to stick without the use of adhesives.

Our tape sticks very well to smooth and flat surfaces such as glass, plastics, painted surfaces, and metals. It will not stick to porous surfaces such as human skin, textiles, or untreated wood.

The tape has a strong conventional adhesive on the other side for mounting on products and surfaces. It is not manufactured without this adhesive.

The tape ships with a clear protective film on the suction surface and a white paper liner on the permanent adhesive side.

## Applications

The tape is used as a non-slip and temporary fixation material. It is used:

- On the inside of mobile phone covers to stick the cover to the phone
- On holders for iPads
- On wireless charging stations and credit card terminals to fix them to the table
- On the backside of guitar picks, so the pick can stick to the guitar

## Holding force

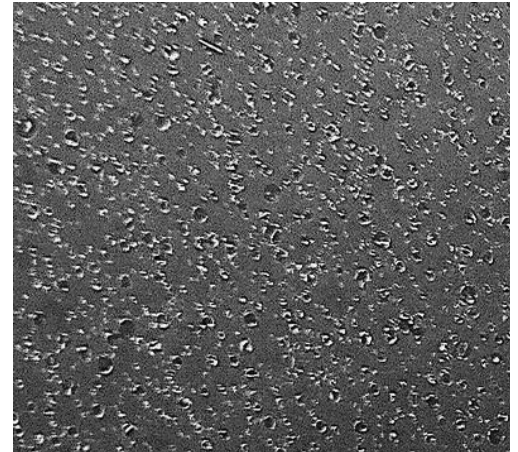
10 cm<sup>2</sup> (32 mm x 32 mm) virgin tape can hold 5-7 kg on clean glass. The holding force is the same for all three thicknesses, but the thicker tape is easier to apply and has a higher apparent holding force because it can better conform to irregularities on the surface it is attached to.

The holding force decreases if the tape is attached and removed repeatedly. Please do your own testing to ensure you have adequate holding force after repeated use.

The holding force is significantly reduced if the tape gets dusty. Touching the suction surface with the fingers will also reduce the holding force.

The holding force can easily be restored by cleaning the tape. This is best done by touching the suction surface repeatedly with sticky side of package tape or Scotch tape. Be aware that tapes with strong adhesives, such as gaffers tape, can destroy the suction surface. It is also possible to clean the tape by wiping it with a wet cloth.

The tape does not work on when wet or when applied to moist surfaces.



The micro-suction surface seen under a microscope

Colours and Thicknesses	
Black	White
0.3 mm	Not available
0.5 mm	0.5 mm
0.8 mm	0.8 mm

Full Roll Lengths	
0.3 mm	30 m
0.5 mm	30 m
0.8 mm	20 m
Roll width: 102 cm	